



Tray Slide – Dual Cab Utes

TRS-DC-COM-MED-ASM0

TRS-DC-COM-WIDE-ASM0

IMPORTANT! – READ BEFORE INSTALLATION

- This product must be installed exactly as per these instructions using only hardware supplied.
- Take a few moments to read instructions thoroughly before beginning work.
- In the event of damage to any bar component please contact OFFROAD ANIMAL to arrange repair/replacement of components.
- Do not use this product for any vehicle make or model other than that specified on these instructions.
- Do not remove labels from this product.
- This product and its fixings must not be modified in any way unless stated in these fitting instructions.
- The installation of this product is recommended for trained personnel.
- These instructions are correct at time of publication. OFFROAD ANIMAL cannot be held responsible for the impact of any changes subsequently made by the vehicle manufacturer. If you find something has changed, please contact us to let us know!
- During installation it is the duty of the installer to check correct operation/clearances of all components.
- If Instructions are to be printed for reference in the workshop, it is recommended that they are printed in colour, for best legibility.
- **Medium Size tray suits most Aussie Dual Cab Utes. Wide Version suits Next Gen Ranger, Next Gen Raptor and Amarok NF. Installation is identical, just the wide version is 75mm wider.**

GENERAL CARE AND MAINTENANCE

Only wash the product with a PH neutral car wash to prevent paint damage and discolouration.

Plastic parts may be maintained with silicone spray.

Do not use acidic or alkaline based cleaning products.

It is important to perform regular checks (pre trip or on an annual basis) on the installed product. Checks include:

- Visual inspection for damage (eg. cracks, chips, dents etc.)
- Electrical wiring is not rubbing anything or worn out
- Bolts are torqued to correct specification (see torque guide below)

For touching up small stone chips, Offroad Animal recommends the following paint products:

- Dupli-Color Trim & Bumper Paint Black (TB101)
- VHT Hood, Bumper & Trim Paint Black (SP27)

BOLT TORQUE SETTINGS

Use the following bolt torques on all general fasteners, unless otherwise specified.

GENERAL FASTENERS	
Size	Torque Nm
M5	5 Nm
M6	9 Nm
M8	22 Nm
M10	44 Nm
M12	77 Nm

Use the following bolt torques on all structural front bar mount and tow point fasteners, and rear towbar fasteners, unless otherwise specified.

FRONT BAR MOUNTS AND TOW POINTS + REAR TOWBAR	
Size	Torque Nm
M10	57 Nm
M12	100 Nm
M14	164 Nm
M16	248 Nm

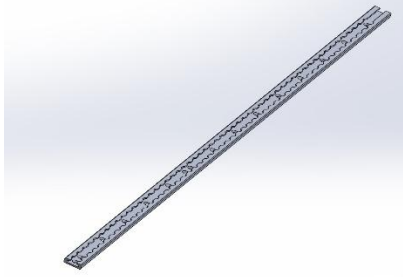
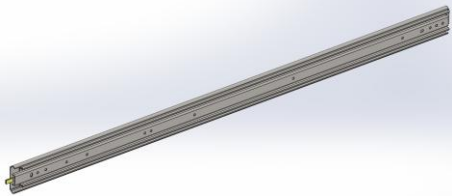
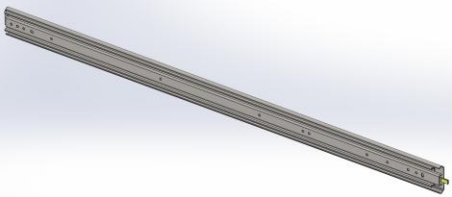
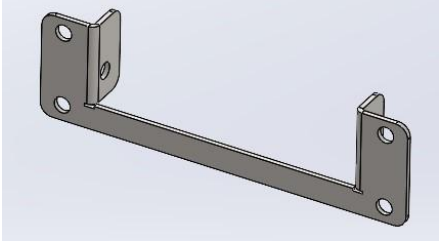
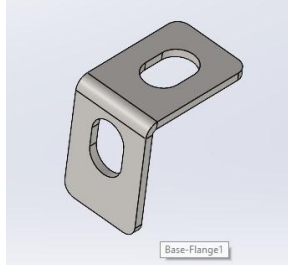
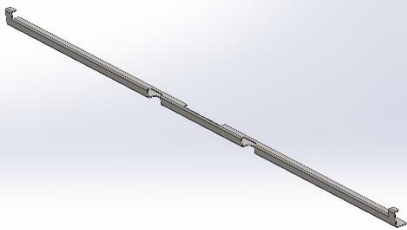
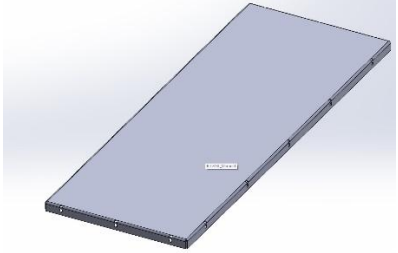
Always use a torque wrench to set correct torque settings. Ensure torque wrench is set to Nm unit of measurement. Otherwise perform conversion to lb-ft.

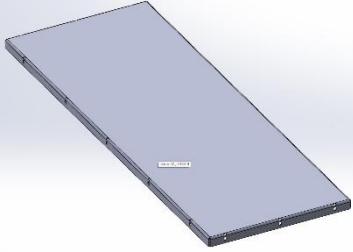
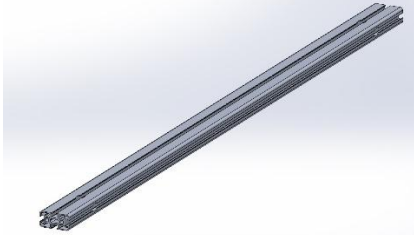
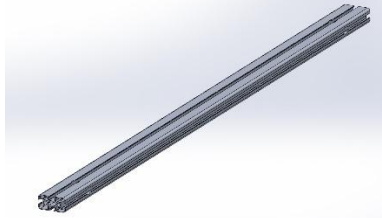
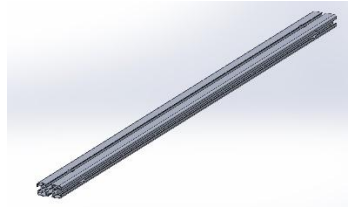
PARTS LISTING

IMPORTANT: Check all parts are present before beginning work! Contact OFFROAD ANIMAL if something is missing.

Main Parts – In the Box

Qty	Part Number	Description	Image
1	B-0557R	Ute Slide end RH	
1	TRS-DC-COM-ASM2L	Ute Slide end LH	
1	B-0562 (medium) B-0826 (wide)	Ute Slide Base	
1	B-0554 (medium) B-0823 (wide)	Ute slide Cover	
1	B-0558	Ute slide hand lever	
2	P-0179	Ute Slide end mount T	

2	L Track 1430	Anchor Track 1430mm	
1	DSCHHD1350MML LHS	Drawer Slide- Heavy Duty, 225Kg, Locking, 1350MM	
1	DSCHHD1350MML RHS	Drawer Slide- Heavy Duty, 225Kg, Locking, 1350MM	
1	B-0555	Ute slide pivot brace	
2	B-0560	Ute slide cover tie in	
1	B-0559 (medium) B-0825 (wide)	Ute slide actuator	
1	B-0818R (medium) B-0824R (wide)	Ally side top RH	

1	B-0818L (medium) B-0824L (wide)	Ally side top LH	
1	E-0005-1275	Extrusion 1275mm	
2	E-0005-1000	Extrusion 1000mm (to suit Medium tray)	
2	E-0005-1075	Extrusion 1075mm (to suit Wide tray)	

Small Parts – Contained in Small Parts Kit Bag

QTY.	PART NO.	DESCRIPTION
42	M8x12 BHCS BZP	Screw, button head cap, M8 x 12 x 1.25 GR12.9 Black zinc nickel
42	M8 N	M8 Nut Zinc
48	M8 FW BZ	M8 Flat Washer Black Zinc nickel
26	M6 x 16 BHCS BZP	Screw, button head cap, M6 x 16 x 1.0 GR12.9 Black zinc nickel
2	M6 NY	M6 Nyloc nut
28	M6 FW BZP	M6 Flat washer black zinc nickel
36	M6 FN	M6 Flange Nut
6	M8 x 16 BHCS BZP	Screw, button head cap, M8 x 16 x 1.25 GR12.9 Black zinc nickel
18	M8 FN	M8 Flange Nut
12	M8 x 50 Hex	M8 x 50 Hex Bolt GR8.8 ZP
12	M8 FW HD	M8 Flat washer Heavy Duty ZP
12	M8 SW	M8 Spring Washer
12	M8 Nutsert	M8 Nutsert
12	M12 FN	M12 Flange Nut
12	M6 x 12 CSK	M6 x 12 Counter Sunk Screw ZP

TOOLS REQUIRED

The following tools will be required to install the product.

Hand Tools	Power Tools	Workshop Supplies
Metric Socket Set 8-19mm Socket Extension Bar Metric Spanner Set 10-19mm Hex (Allen) Key Set 4-6mm Utility Knife Manual Nutsert Setting tool (optional)	Electric Drill 13 mm Drill Bit Power Nutsert Setting tool (Optional) Electric/Air Impact Driver (Optional)	Panel Stand or Soft Blanket

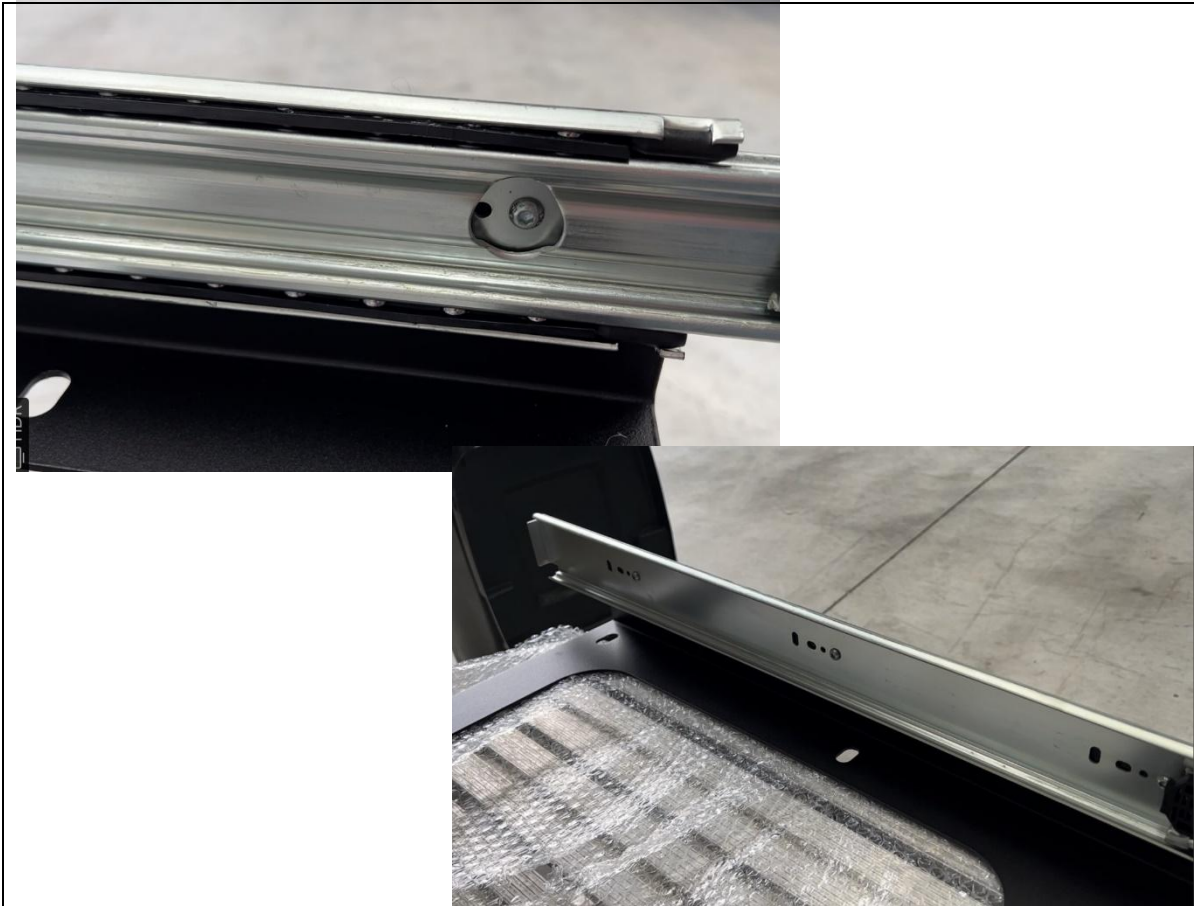
WORKSHOP SAFETY

It is the responsibility of the installer to always complete works in a safe manner. Make sure the following safety equipment is available and precautions are observed whilst fitting this product.

<p>Hearing Protection</p> 	<p>Always wear ear protection when using power tools.</p>
<p>Eye Protection</p> 	<p>Ensure eye protection is always worn when cutting or drilling.</p>
<p>Manual Handling</p> 	<p>Do not attempt to lift bar assemblies or rock sliders on your own.</p> <p>Always use two people to lift or use mechanical Lifting aid such as hydraulic lifting trolley.</p>
<p>Vehicle Support</p> 	<p>Always ensure vehicle is properly supported when working on it. Do not attempt to fit products whilst suspension work is being carried out. Do not work under a vehicle supported only by a jack.</p>



<ol style="list-style-type: none">1. Begin by unwrapping all components and ensuring you have everything before starting.2. Place the frame on a blanket on the floor or a table and install the locking drawer runner.3. There is an RH and LH runner, locking tab needs to rotate up with the locking tab facing away from the arrow on the frame. The arrow represents the direction the vehicle travels, so the tabs need to be at the back of the vehicle.	TOOLS REQUIRED
<ol style="list-style-type: none">4. The edge of the runner lines up with the back of the frame. You can use any of the 3 mounting holes (on the frame.) Each is 15mm apart. The lowest one is fine for most vehicles however some vehicles like the RA Ranger and 2nd Gen Amarok have a higher tailgate so need to use the middle or top holes to push the slide up. Best way to determine is to put a straight edge on the tailgate and measure the gap if any to the floor (top of ridges) of the tub. You want the floor of the tub to be at least 15mm higher than the tailgate floor. So, if your tail gate is below or level with the tub floor the bottom hole should be fine. If the tailgate is 15mm higher than the tub floor, use the top hole.	FASTENERS



5. Open the locking drawer runner to reveal hidden bolt holes at the front. You will need to move the runner to reveal other hidden holes.
6. Place M6x16 BHCS through large hole in runner and into frame then torque down bolt (20NM) with Flange nut on back side. **Do not move runner with a loose bolt in the hole as it may become jammed.**
7. Put all 5 M6 screws in to hold drawer runner to frame as shown and secure with M6 flange nuts.
8. Repeat for other side.

TOOLS REQUIRED

4mm Hex Key

FASTENERSM6 x 16 BHCS (10)
M6 FN (10)



9. Fit 2 x M8 nuts per side into 1275mm extrusion.	TOOLS REQUIRED
	FASTENERS M8 Nut (4)



<div>10. Secure end mount T brackets on either end with M8x12 BHCS and Flat washers.</div> <div>11. Tighten up by hand only.</div>	TOOLS REQUIRED
	FASTENERS M8x12 Button head bolt. (4) M8 Flat Washer (4)



12. Place 3 more M8 nuts per side into cross bars (1000mm for medium tray and 1075mm for wide tray,) then secure end mount T bracket with 3 more M8 x 12 BHCS per side.

13. Leave all screws hand tight now.

TOOLS REQUIRED**FASTENERS**

M8x12 Button head bolt. (6)
M8 Flat Washer (6)



14. Fit one M8 nut per side into the end of the shorter cross extrusion and then offer up the end pieces, remembering the arrows need to face the same direction.

15. Leave hand tight now, secure with M8 x 12 BHCS and washer.

TOOLS REQUIRED**FASTENERS**

M8x12 Button head bolt. (4)
M8 Flat Washer (4)



16. Attach anchor track to top edge of sides as shown with M6 Counter Sunk Screws. Torque down screws.

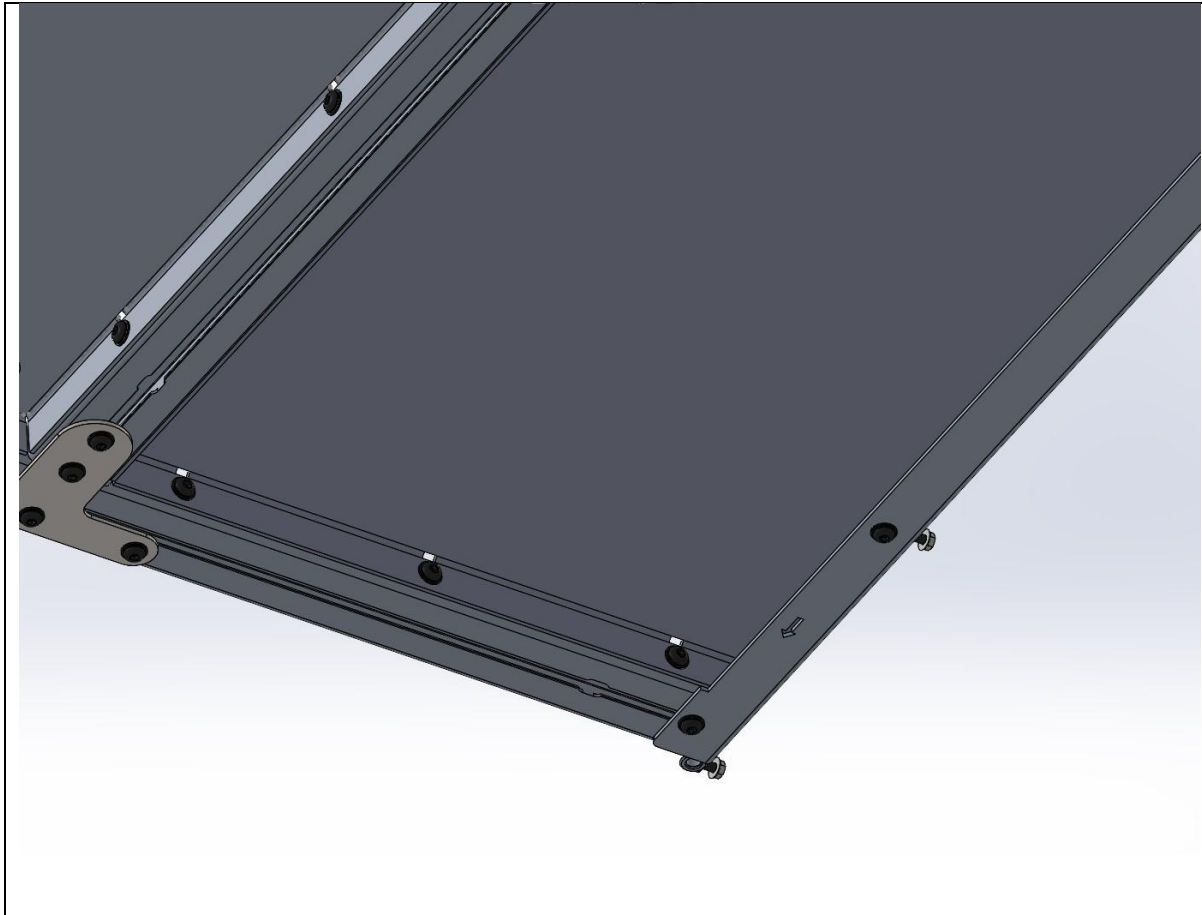
17. Repeat for other sides.

TOOLS REQUIRED

4mm Hex Key

FASTENERS

M6x12 Counter Sunk Screw (12)
M6 Flange Nut (12)



18. Fit 11x M8 nuts in each half to hold panel in place, 3x in front, 3x in back and 5x in the side of the middle extrusion.

19. Fit panels as shown, with folded return lying on the side with the arrow, and secure with M8 x 12 BHCS and washers.

20. Secure the folded edge side with 2 M8x 12 BHCS, flat washers and Flange nuts

21. Torque M8 button head cap screws down all bolts into extrusion.

TOOLS REQUIRED

5mm Hex Key

FASTENERS

M8x12 Button head bolt. (26)

M8 x Nuts (26).

M8 Flat Washer (26)

M8 Flange Nut (4)



<div>22. With the help of a friend lift the tray on to the frame.</div> <div>23. Open the drawer slides all the way out and attach the sides of the tray to the extended arms of the drawer slide. Start with the last screw hole closest to the release mechanism. Each bolt goes into the round hole on the slide.</div> <div>24. Secure with M6 x 16 BHCS, flat washers and flange nuts.</div>	<div>TOOLS REQUIRED</div> <div>4mm Hex Key</div>
	<div>FASTENERS</div> <div>M6 x 16 BHCS (8) M6 FW (8) M6 FN (8)</div>



25. You will need to manually move the slide mechanism for each side to reveal the holes to put the screws in to mount the slide to the tray.
26. **Make sure you tighten each screw before moving the slide or you could bind the slide and stuff the entire slide.**

TOOLS REQUIRED

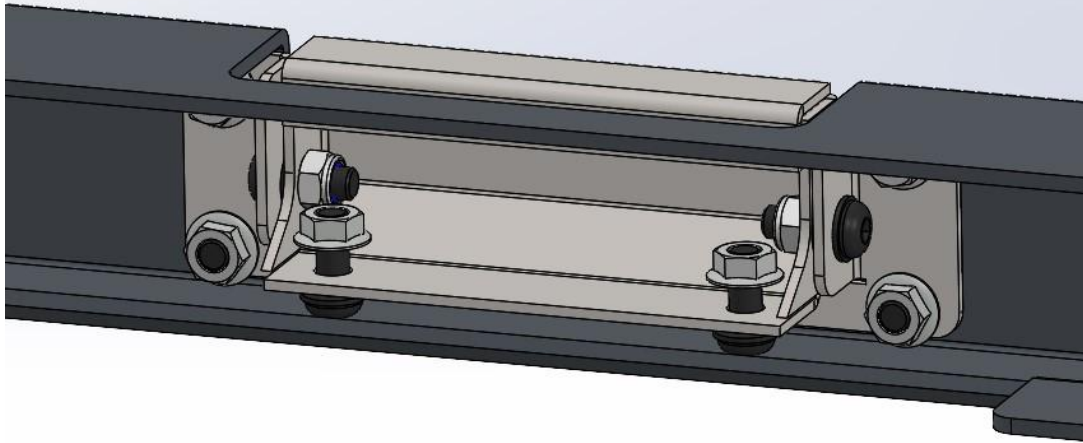
4mm Hex Key
10mm Spanner

FASTENERS

M6x16 Button head bolt. (8)
M6 Flat Washer (8)
M6 FN (8)

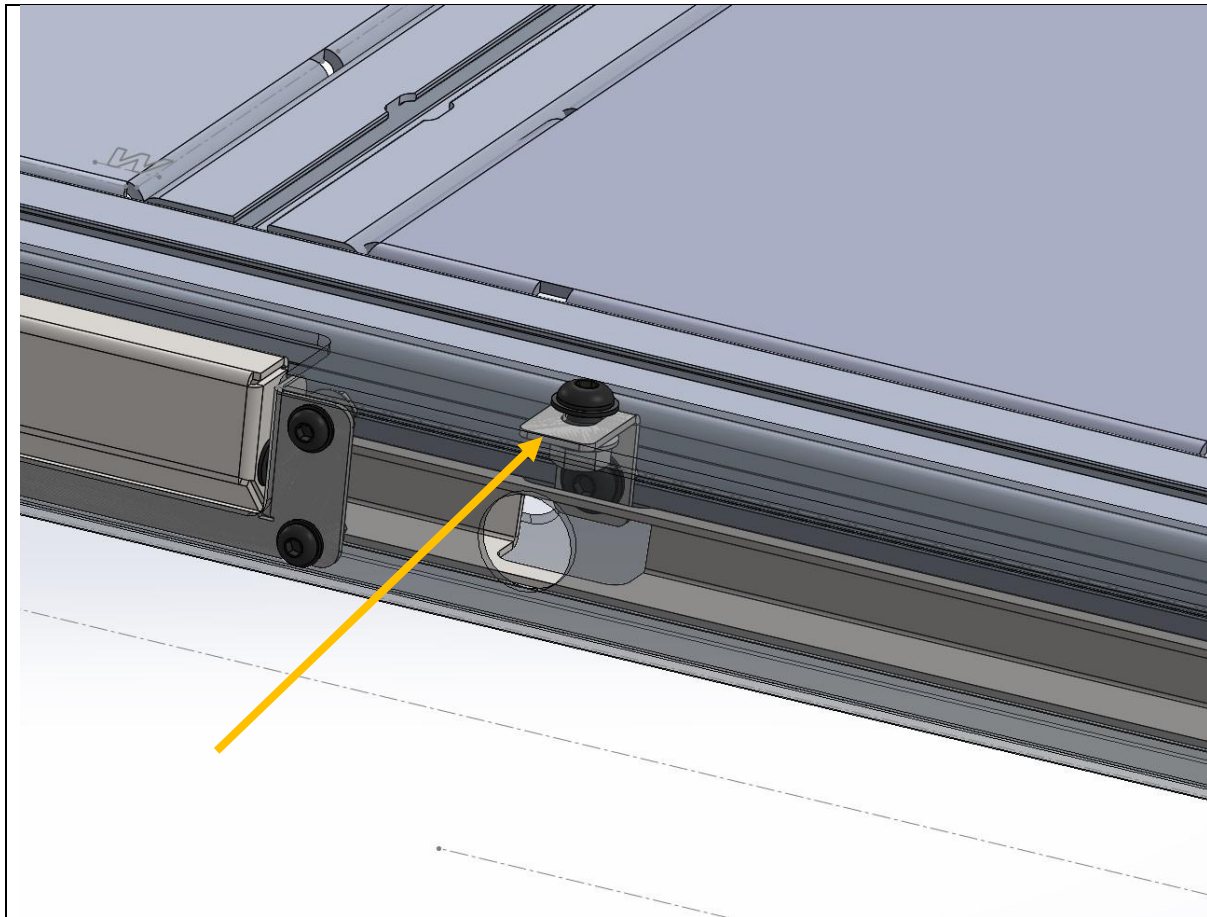


27. Finish putting all 4 screws per side securing the tray to the slides.	TOOLS REQUIRED 4mm Hex Key
	FASTENERS 8x M6x16 Button head bolt. 8x M6 Flat Washer 8x M6 Flange Nut



28. The assembled release mechanism is shown above. This step shows how it all fits together, skip to the next step to show it on the slide.

TOOLS REQUIRED**FASTENERS**



29. Fit the Ute Slide cover tie ins with M8 x 12 BHCS, washer and nut into the extrusion. The cover is shown transparent in this image for clarity.

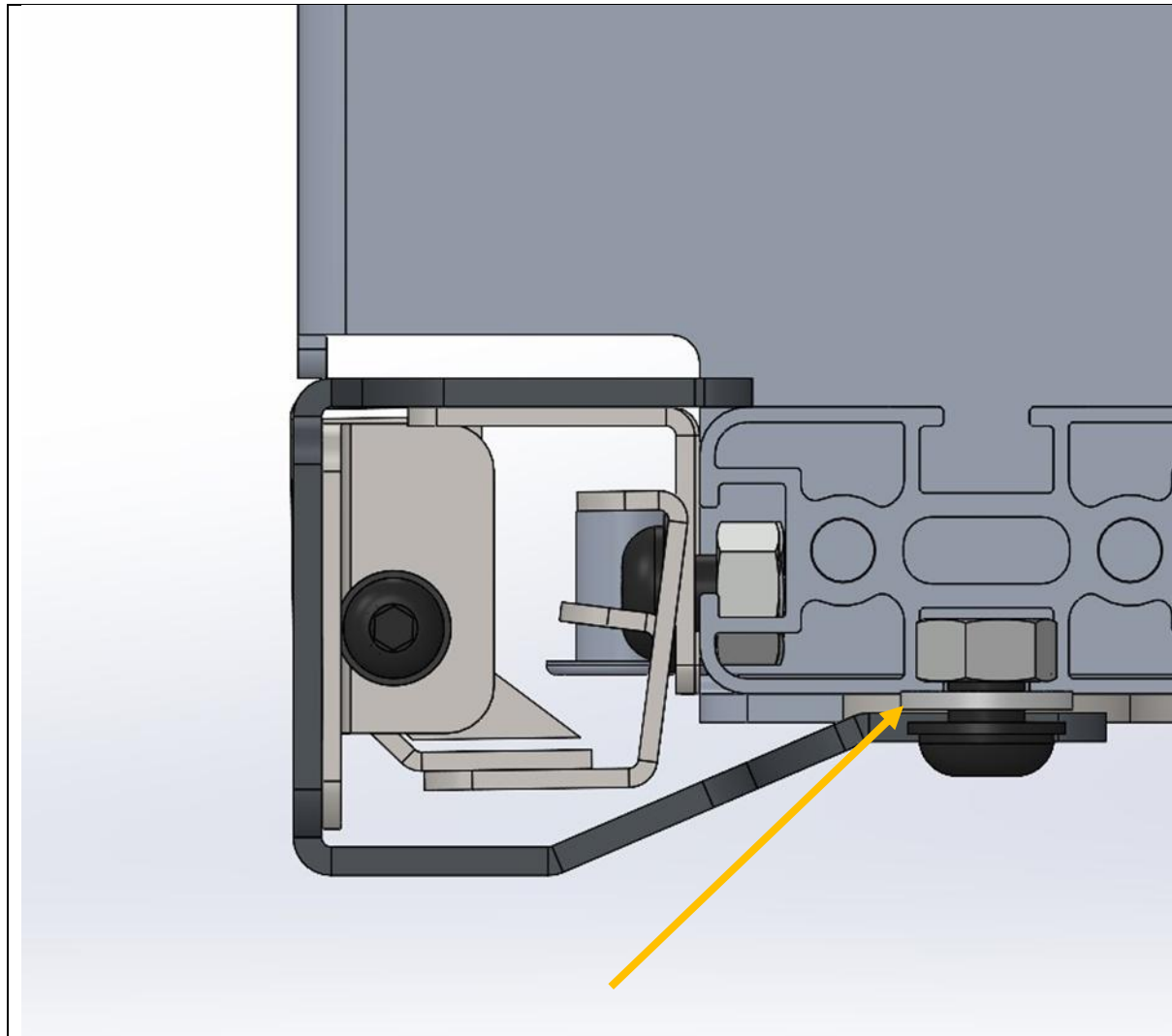
30. Repeat for other side

TOOLS REQUIRED

5mm Allen key

FASTENERS

M8x12 BHCS (4)
M8 FW (4)
M8 Nut (2)
M8 FN (2)



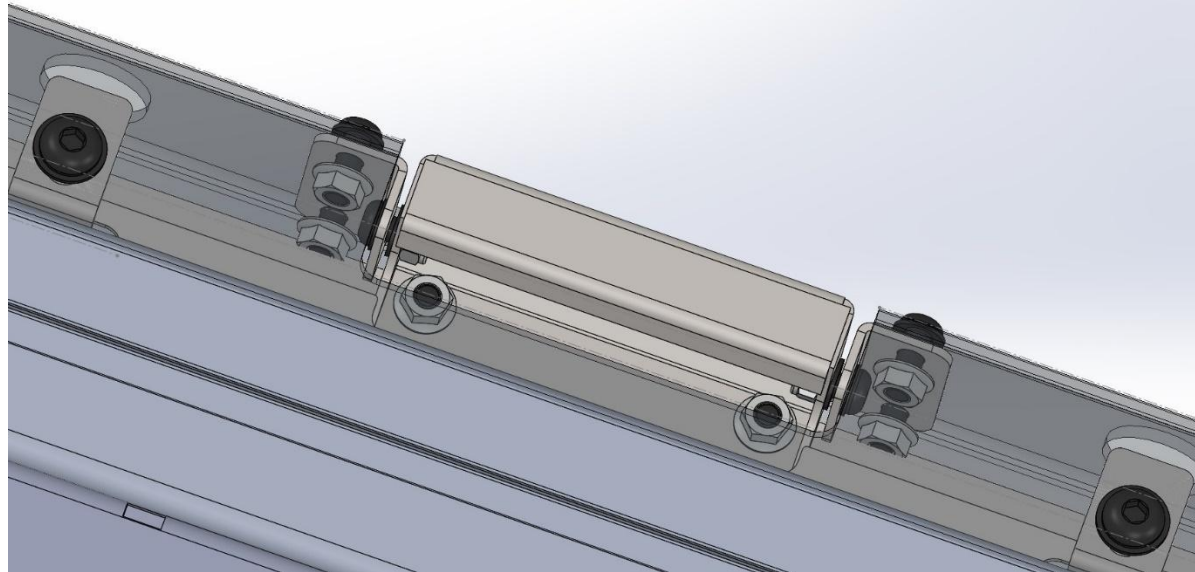
31. **When fitting the cover to the back end, ensure you have a washer as a spacer between the cover and the extrusion. This step is important.**
32. Then place the actuator in the gap, and fit the pivot brace and hand lever to the cover
33. Secure cover to extrusion with 4x M8 x 12 BHCS from underneath

TOOLS REQUIRED

5mm Hex Key

FASTENERS

M8x12 BHCS (4)
M8 FW (4)
M8 Nut (4)



34. The M6x16 screws go through the side of the brace into the actuator. Use a washer between the handle and the brace, then nyloc on the inside. Yes, I know it's fiddly to torque up, but it's possible.

35. Torque up all the M6x16 bolts.

36. Torque up M8 screws into the cover tie-ins

TOOLS REQUIRED

4mm Hex Key
10mm Open end Spanner
5mm Hex Key

FASTENERS

M6x16 Button head bolt. (8)
M6 Flat Washer (8)
M6 FN (8)



37. Ensure the actuator sits just below, or hardly touching the release mechanism.

If it is too high, it will actuate the release mechanism and prevent the slide from locking open or closed.

If it's too high you can lower the handle on the slots by loosening the 4 M6 screws in the back face of the cover, or with washers between the cover and the end extrusion lowering the cover down a few millimeters. Pulling the handle should then lift up the release mechanism.

TOOLS REQUIRED

4 and 5mm Hex key

FASTENERS



38. The entire slide is ready to be installed in the vehicle.
39. Lift it all into the back of the Ute and centralize it. Ensure the tailgate can close and there is at least a 15mm gap between the closed tail gate and the back of the tray slide. Then Slightly open the slide up with the frame staying in its correct location to reveal the mounting holes in the frame.
40. Mark all the holes possible then remove the entire slide. You may need to support the slide while it's extended or secure the frame with a few bolts so you can mark the front ones.
41. Drill the marked holes to 11mm. then treat the exposed edges with paint
42. If using nutserts, install them now with a nutsert gun otherwise skip to next step.

TOOLS REQUIRED

Power drill
11mm drill bit
13mm Socket
Optional Nutsert gun
Paint Pen or spary paint

FASTENERS

Optional m8 Nutserts



43. After all the holes are drilled lift the entire slide back in and secure with M8 hardware into nutserts or straight through tub. Don't worry if you can't fit every bolt in due supports under neath, make sure you get at least 6 bolts through.

44. If any holes end up on the valley of a rib you can use the supplied M12 flange nuts as a spacer, so the frame pulls up to it and not flex into the valley.

45. Ensure tray slides in and out with ease. If it does not lock in the in and out position, you need to adjust the handle or cover.

46. You're done, enjoy

TOOLS REQUIRED

13mm Socket

FASTENERS

M8 x 50 Hex bolt
M8 flat washers
M8 Nutsert, or flange nuts